

## Subfloor Ventilator Powered by Air iQ

EcoFan® powered by Air iQ is a quality subfloor ventilator with powerful air flow. It removes damp, stale air and odours from the underfloor, replacing it with fresh, dry air. Improving the air quality creates a healthier environment, reducing damaging underfloor condensation, unwanted pests and vermin.

### Condensation Management

Three preset fixed speed settings can be used for the continuous and reliable reduction of damaging condensation and stale, damp air throughout the year.



### Humidity Detection

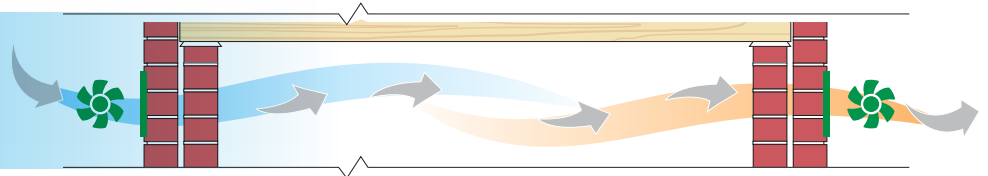
EcoFan's humidity sensor adjusts the speed setting based on the levels of humidity detected for a year round ventilation solution.



Bradford Ventilation is a proud partner of Sensitive Choice®

### TWIN PACK NOW AVAILABLE

Create a continuous flow of fresh sub floor air with two EcoFans - one creates an inflow of fresh air, the other extracts the damp, stale air.



#### Features:

- Made from tough, high quality UV stable polymer
- Maximum flow rate of 734 m<sup>3</sup>/hr<sup>^</sup>
- Preset automatic temperature controlled variable speed setting or three preset fixed speed settings\*
- Humidity sensor automatically adjusts settings based on detected humidity levels
- Available in a twin pack for effective cross ventilation
- Inflow and extraction settings
- High efficiency 24V DC motor

#### Benefits:

- Effective removal of subfloor damp, stale air and odours
- Helps reduce household allergies and respiratory problems
- The fan can be configured to power fresh air in or extract damaging and unhealthy air
- Quiet operation, low running costs and reduced energy usage
- Reduces causes of mould, fungal growth and termite attraction

<sup>^</sup>Single unit

\*Operating mode needs to be preset during installation. Changes to operating mode may require access to under floor areas.

†One year warranty on power pack.

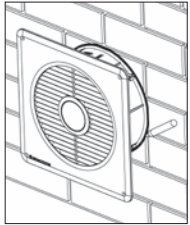
# Specifications

EcoFan	
Flow rate	Up to 734 m <sup>3</sup> /hr
Speeds*	Preset automatic variable speed. Preset fixed speeds: low, medium and high
Power supply output and fan motor	24V DC
Dome and housing	UV stable polymer

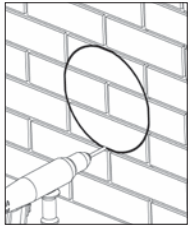
Colours	Material Code	Carton Size (L x W x H)
White	Single	112158
	Twin	134204
Brown	Single	112157
	Twin	134203

\*Operating mode needs to be preset during installation. Changes to operating mode require access to roof space.

## Installation guidelines

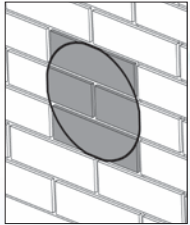


Select appropriate position. Using the fan housing as a guide, mark out a circle/location on the wall.

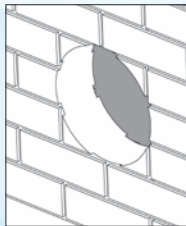
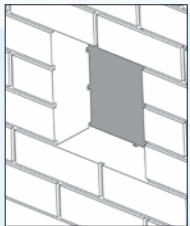


Using an impact drill and 6mm drill bit. Drill holes spaced 3-4 cm around the marked perimeter. Using a hammer carefully knock out the bricks to form a circular hole in the wall.

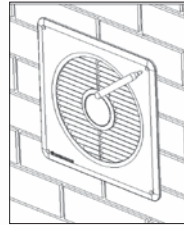
OR



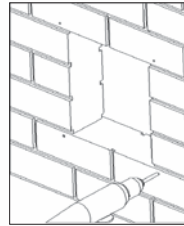
Remove the complete top and bottom shaded bricks. Cut and remove the middle shaded bricks.



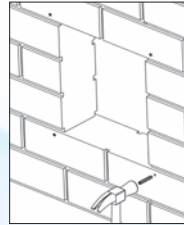
Clear the hole of debris.



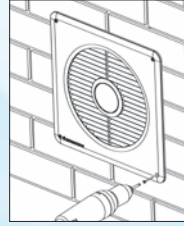
Insert the EcoFan<sup>®</sup> into the hole. Make sure it is level and the correct way up. Mark the positions of the mounting holes.



Remove the unit and using a 6mm masonry bit, drill mounting holes as marked previously.



Insert supplied wall plugs into the 6mm drilled mounting holes. Tap into hole with hammer until flush.



Using the supplied screws, screw the EcoFan<sup>®</sup> into the wall plugs.

Detailed warranties, technical data sheets and installation instructions available at [bradfordventilation.com.au](http://bradfordventilation.com.au)

For more information, call **1300 858 674**

CSR Bradford  
Locked Bag 1345 North Ryde BC NSW 1670

CSR Bradford is a business division of CSR Building Products Limited ABN 55 008 631 356.

The COLORBOND<sup>®</sup> steel colour swatches and images shown in this brochure have been reproduced to represent actual product colours as accurately as possible. However, we recommend checking your chosen colour against an actual sample of the product before purchasing as varying light conditions and limitations of the printing process may affect colour tones. COLORBOND<sup>®</sup>, BlueScope, <sup>™</sup> and © Colour names are registered trademarks of BlueScope Steel Limited.